

## Appendix 2 – Photographs



Cypress Pine in the White Box – Pine – Silver Leaved Ironbark shrubby open forest to the north of the disturbance area.



Vegetation within the road side reserve of Bullala National Park.



1 m<sup>2</sup> Sample Quadrant



1 m<sup>2</sup> Sample Quadrant





1 m<sup>2</sup> Sample Quadrant



Grazing area with bore, stock yards, dams



Ants Nest within Transect 1, showing lack of ground cover.



Vegetation within Transect 1



Animal diggings within Transect 1



Vegetation within Transect 1





Dirty Gum Pine Smooth-barked Apple open Forest  
RCV (237228E, 6745712S)

Dirty Gum Pine Smooth-barked Apple open Forest  
RCV (237228E, 6745712S)



Dirty Gum Pine Smooth-barked Apple open Forest  
RCV (237228E, 6745712S)

Dirty Gum Pine Smooth-barked Apple open Forest  
RCV (237228E, 6745712S)



Open Grazing land

Open Grazing land

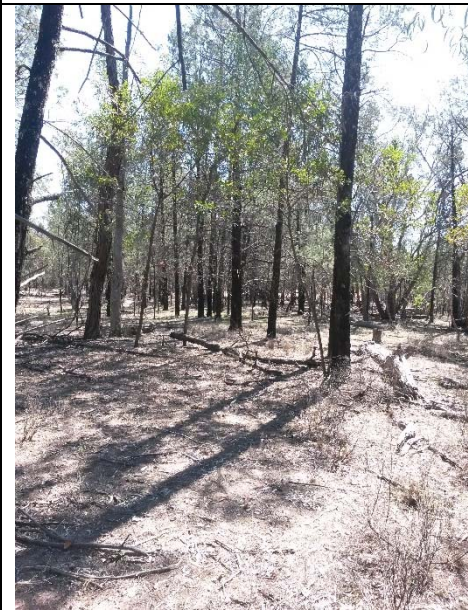




Transect 2



Transect 2



Transect 2



Transect 2



Transect 3



Transect 3





Transect 4



Transect 4 – 0 m



Transect 4 – 5 m



Transect 4 – 10 m



Transect 4 – 15 m



Transect 4 – 20 m





Transect 4 – 25 m



Transect 4 – 30 m



Transect 4 – 35 m



Transect 4 – 40 m



Transect 4 – 45 m



Transect 4 – 50 m





Transect 4 – 55 m



Transect 4 – 60 m



Transect 4 – 65 m



Transect 4 – 70 m



Transect 4 – 75 m



Transect 4 – 80 m





Transect 4 – 85 m



Transect 4 – 90 m



Transect 4 – 95m



Transect 5



Transect 5



Sediment Pond (236638E, 6744824S)





Vegetation on sandy soils



Vegetation on sandy soil



Vegetation on sandy soils



Vegetation on sandy soils



Transect 6



Transect 6





Transect 6



Transect 6



Transect 7



Transect 7



Transect 7



Transect 7





Transect 8



Transect 8



Transect 8



Transect 8



Transect 9



Transect 9





Transect 10



Transect 10



Transect 10



Transect 10



Transect 11



Transect 11





Transect 12



Transect 12



Transect 13



Transect 13



Transect 13



Transect 13





Seven Rows of Solar Panels (237014 E, 6744940 S) on the southern edge of the quarry.